

## IRONING AND FOLDING

## WALL IRONERS ROLLER Ø 250 P-25-100/120/140/200 M

### CHARACTERISTICS

#### ELECTRONIC PROGRAMMER

- Simple and user friendly : digital screen, precise control of temperature
- Preset ironing speeds, not adjustable

#### EFFICIENCY

- Acoustic comfort : 55 dB max
- Minimum space requirement: space saving, suitable for small spaces.
- Ideal for processing small quantity of flat linen in facilities like restaurants, guest rooms, hostels...

#### ROBUSTNESS

- Nomex coating: resistant to high temperatures
- Panels in grey skinplate and stainless steel
- Wooden feeding table
- New kinematics: better reliability
- Industrial roll axle and bearings: more durable

#### FEATURES

- Large roll contact area with the linen
- Automatic roll lifting control by foot cell detection.
- Two available models:
  - Standard: roll with cotton polyester coating.
  - Nomex: roll with Nomex coating.

#### MAINTENANCE

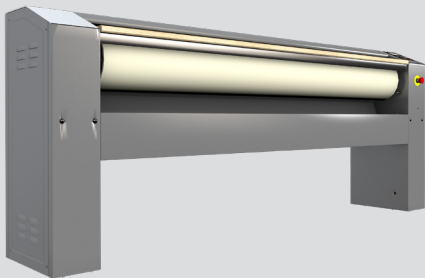
- Easy installation : requires only an electrical connection
- Easy access on both sides for maintenance
- Quick and easy dismantling of bearings

#### OTHERS

- Irons flat linen with recommended relative moisture between 5 and 10 % from a tumble dryer
- Front feeding and return
- Roll ø 250 mm
- Working widths: 1.000, 1.200 ,1.400 and 2.000 mm
- Electric heating
- CE certification

#### OPTIONS

- Pedal control kit (instead of photocell)
- Marine voltage 440V III 60 Hz without N
- 230V III+T 50-60 Hz
- 230V I+N+T 50 Hz (except P25/200 model)

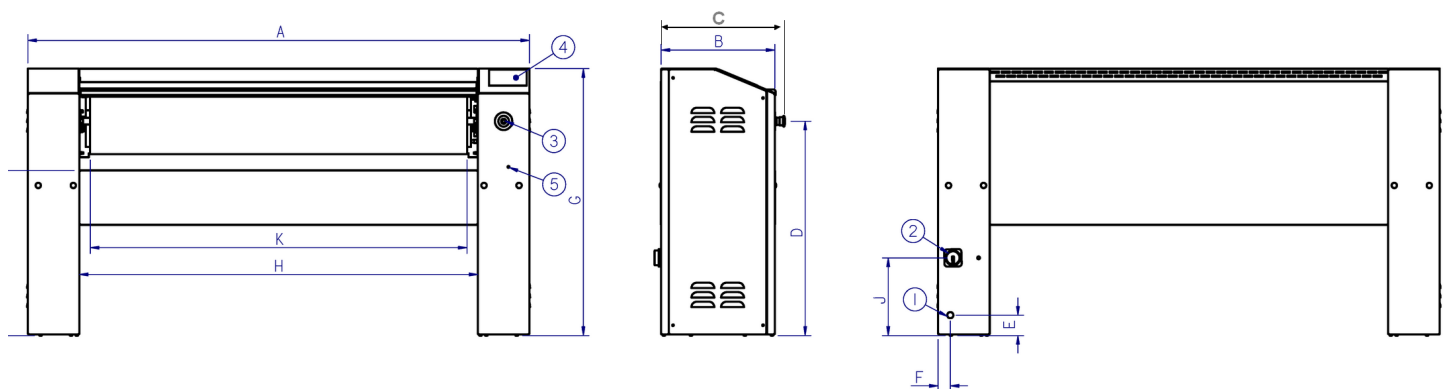


# TECHNICAL DATA

## WALL IRONERS | ROLLER Ø 250 | P-25-100/120/140/200 M

	UNIT.	P-25/100 M	P-25/120 M	P-25/140 M	P-25/200 M
<b>GENERAL DATA</b>					
Theoretical production*	Kg/h	25	27,5	30	35
	Lb/h	55,12	60,63	66,14	77,16
Ø Roll	mm	250	250	250	250
	inch	9,84	9,84	9,84	9,84
Working width	mm	1.000	1.200	1.400	2.000
	inch	39,37	47,24	55,12	78,74
Working speed	m/min	4,2	4,2	4,2	4,2
	ft/mn	13,77	13,77	13,77	13,77
Electronic control	-	Yes	Yes	Yes	Yes
Chest motion	-	Auto	Auto	Auto	Auto
<b>POWER</b>					
Heating power	Kw	4,95	6	7	12
Roll motor power	Kw	0,18	0,18	0,18	0,18
Total electric power	Kw	5,13	6,18	7,18	12,18
<b>CONNECTIONS</b>		<b>ELECTRIC</b>	<b>ELECTRIC</b>	<b>ELECTRIC</b>	<b>ELECTRIC</b>
Tension 230V - I + N + T	n° x mm² /A	3 x 6 / 25A	3 x 6 / 32A	3 x 10 / 40A	-
	n° x AWG/A	3 x 9 / 25A	3 x 9 / 32A	3 x 7 / 40A	-
Tension 230V - III + T	n° x mm² /A	4 x 2,5 / 16A	4 x 4 / 20A	4 x 4 / 20A	4 x 6 / 32A
	n° x AWG/A	4 x 13 / 16A	4 x 11 / 20A	4 x 11 / 20A	4 x 9 / 32A
Tension 400V - III + N + T	n° x mm² /A	5 x 2,5 / 10A	5 x 2,5 / 10A	5 x 2,5 / 16A	5 x 4 / 20A
	n° x AWG/A	5 x 13 / 10A	5 x 13 / 10A	5 x 13 / 16A	5 x 11 / 20A
<b>DIMENSIONS / PACKING DIMENSIONS</b>					
Net width/ Gross width	mm	1.462 / 1.490	1.662 / 1.690	1.862 / 1.890	2.462 / 2.490
	inch	58 / 59	65 / 67	73 / 74	97 / 98
Net depth/ Gross depth	mm	484 / 540	484 / 540	484 / 540	484 / 540
	inch	19 / 21	19 / 21	19 / 21	19 / 21
Net height/ Gross height	mm	985 / 1.130	985 / 1.130	985 / 1.130	985 / 1.130
	inch	39 / 44	39 / 44	39 / 44	39 / 44
Net weight/ Gross weight	Kg	114 / 124	124 / 134	134 / 154	164 / 184
	Lb	251 / 273	273 / 295	295 / 340	362 / 406
Net volume / Gross volume	m³	0,69 / 0,91	0,79 / 1,03	0,89 / 1,15	1,17 / 1,51
	ft³	24,37 / 32,14	27,90 / 36,37	31,43 / 40,61	41,32 / 53,33
<b>OTHERS</b>					
Noise level	dB	55	55	55	55

\*20% - 25% residual moisture



	A	B	C	D	E	F	G	H	I	J	K
P-25/100	1.462	423	484	791	75	45	985	1.079	610	287	998
P-25/120	1.662	423	484	791	75	45	985	1.279	610	287	1.198
P-25/140	1.862	423	484	791	75	45	985	1.479	610	287	1.398
P-25/200	2.462	423	484	791	75	45	985	2.079	610	287	1.998