

## IRONING AND FOLDING

## WALL IRONERS ROLLER Ø 180 P-18-100/120 M

### CHARACTERISTICS

#### ELECTRONIC PROGRAMMER M

- Simple and user friendly: Electronic control: start/stop, selection of 4 temperatures.
- Preset ironing speeds, not adjustable.

#### EFFICIENCY

- Acoustic comfort : <55 dB
- Minimum space requirement: space saving, suitable for small spaces
- Ideal for processing small quantity of flat linen in facilities like restaurants, guest rooms, hostels...

#### ROBUSTNESS

- Nomex quality coating: resistant to high temperatures.
- Panels in skinplate, top panel in stainless steel.
- Wooden feeding board.

#### FEATURES

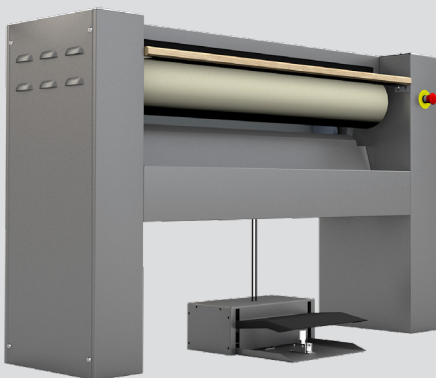
- Large roll contact area with the linen.
- Roll lifting control by pedal.
- Two available models:
  - Standard: roll with cotton polyester coating.
  - Nomex: roll with Nomex coating.

#### MAINTENANCE

- Easy installation: requires only an electrical connection.
- Easy access on both sides for maintenance.

### OTHERS

- Irons flat linen with recommended relative moisture between 5 and 10 % from a tumble dryer
- Front feeding and return
- Roll Ø 180 mm
- Working widths: 1.000 and 1.200mm
- Electric heating
- CE certification

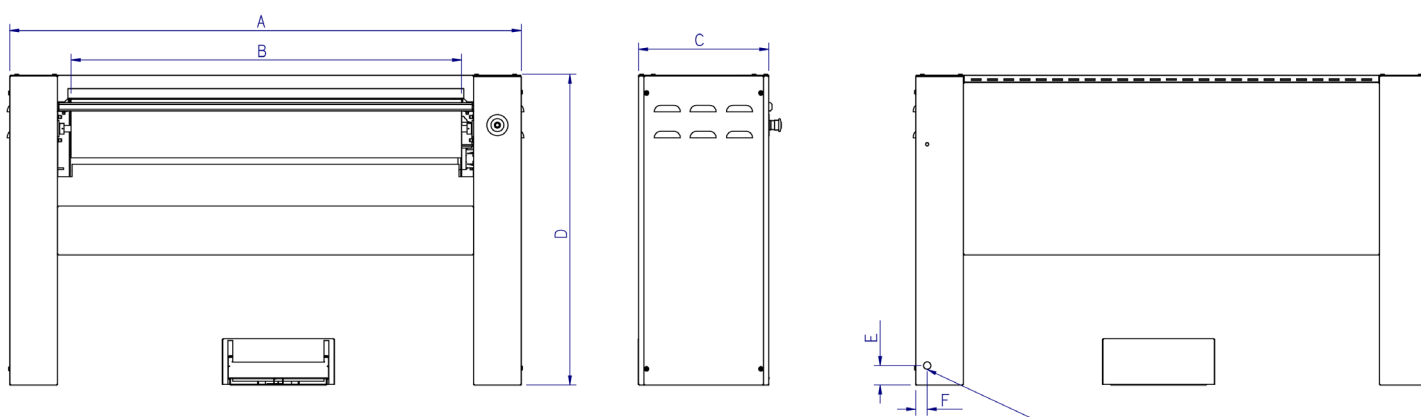


# TECHNICAL DATA

## WALL IRONERS | ROLLER Ø 180 | P-18-100/120 M

	UNIT.	P-18/100 M	P-18/120 M
<b>GENERAL DATA</b>			
Theoretical production*	Kg/h	15	20
	Lb/h	33,07	44,09
Ø Roll	mm	180	180
	inch	7,09	7,09
Working width	mm	1.000	1.200
	inch	39,37	47,24
Working speed	m/min	2,02	2,02
	ft/min	6,62	6,62
Electronic control	-	Yes	Yes
Chest motion	-	Manual by pedal	Manual by pedal
<b>POWER</b>			
Heating power	Kw	3,3	4
Roll motor power	Kw	0,029	0,029
Total electric power	Kw	3,329	4,029
<b>CONNECTIONS</b>			
Tension 230V - I + N + T	n° x mm² / A	3 x 4 / 16A	3 x 4 / 20A
	n° x AWG/A	3 x 11 / 16A	3 x 11 / 20A
<b>DIMENSIONS/ PACKING DIMENSIONS</b>			
Net width / Gross width	mm	1.370 / 1.490	1.570 / 1.690
	inch	54 / 59	62 / 67
Net depth / Gross depth	mm	438 / 540	438 / 540
	inch	17 / 21	17 / 21
Net height / Gross height	mm	952 / 1.130	952 / 1.130
	inch	37 / 44	37 / 44
Net weight / Gross weight	Kg	80 / 100	90 / 110
	Lb	176 / 220	198 / 243
Net volume / Gross volume	m³	0,57 / 0,91	0,65 / 1,03
	ft³	20,13 / 32,14	22,95 / 36,37
<b>OTHERS</b>			
Sound level	dB	55	55

\*20% -25% residual moisture



01. Electrical connection

	A	B	C	D	E	F
P-18/100	1.370	1.000	400	952	60	35
P-18/120	1.570	1.200	400	952	60	35