



WASHING

SANITARY BARRIERS LBS RANGE LBS-35 TP2



Pullman drum option

CHARACTERISTICS

TP2

- 7" touch screen easy to use and fully programmable, double display.
- Connection USB. Free software online for programming, telemetry, data analysis...
- Videos on display (instructions...).
- 37 languages.
- 8 dosing signals as standard.

OUTSTANDING FEATURES

- Automatic positioning of drum with motor brake.
- 3 water inlets as standard.
- Wet cleaning features ready.
- G-FACTOR 375.
- Telemetry as standard.
- Heating: electric, steam, and new dual heating model (electric+steam).

EFFICIENCY

- Intelligent consumption.
- Optimal loading.
- Water Recovery tanks ready: KRS.
- Low water consumption.
- High G-FACTOR: reduced residual moisture > reduced drying time.

CONNECTIVITY

- IoT FagorConnect.
- Remote technical service.
- Laundry management.

ERGONOMICS

- Huge door opening making loading/unloading easier.
- Easy friendly drum opening by push button.
- Loading height: door base 800 mm.
- Pullman drum: load optimisation (option).

MAINTENANCE

- Electric components on the left side, mechanic components on the right side and connections on the top (protected from water and detergents).
- Central drain as standard.

- Technical menu: statistics, alarms, autotest, data recovery for technicians and maintenance.

OTHERS

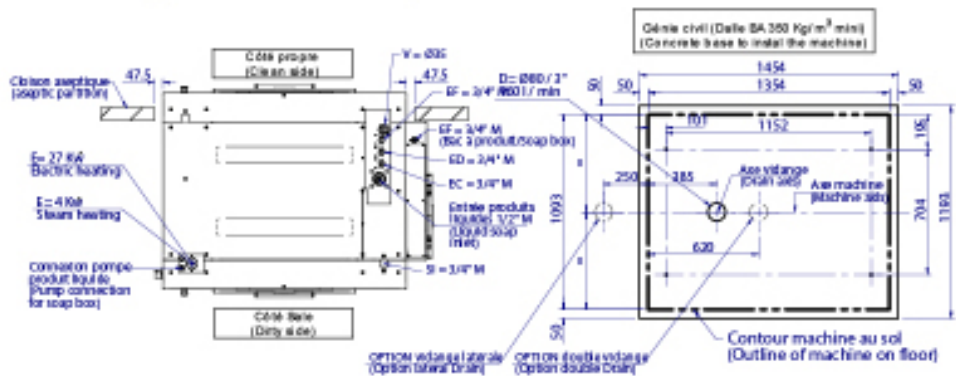
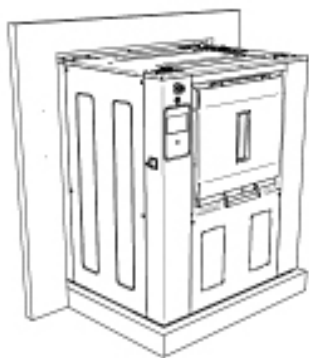
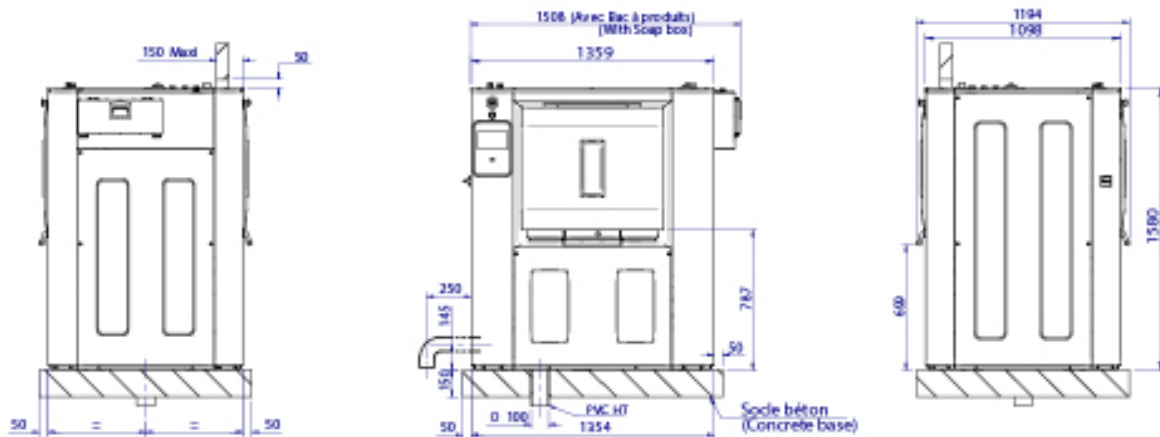
- 2 opposed doors. Pass-through barrier washer.
- Ready to be connected to dosing pumps.
- Grey skinplate outer casing.
- Drum and vat in stainless steel AISI 304.
- Frequency inverter to control imbalance.
- CE approved product.
- Third water inlet.

OPTIONS

- 1-door opening (single side operation).
- Pullman drum.
- Auto Weight: automatic weighing sensor system on feet (Includes kit with 6 extra dosing signals).
- Relay card with 6 extra dosing signals: up to 14 signals.
- Double drain.
- Titration valve.
- Side drain valve.
- Low steam pressure (0,5 bar).
- Detergent box with 4 compartments.
- UPS device (in case of power failure).
- End of cycle light alarm.
- Plinth to align loading height (door base at 850mm).
- Stainless steel AISI 304 outer casing.
- Stainless steel AISI 304 sanitary frame.
- Other voltages.

	UNIT.	LBS-35 TP2	
DRUM			
Capacity 1:9	Kg	38,8	
	Lb	85,5	
Capacity 1:10	Kg	35	
	Lb	77,2	
Volume	l	347	
	ft ³	12,25	
Diameter	mm	800	
	inch	31,5	
Depth	mm	690	
	inch	27,2	
Number of compartments	Nº.	1	
Pullman partition of drum		Opt	
GENERAL DETAILS			
Washing speed	r.p.m.	45	
Spining speed	r.p.m.	920	
G Factor		375	
Maximum force transmitted	KN	2,62	
Frequency-dynamic force	Hz	15,4	
Sound level	dB	< 70	
Double drain		Opt	
Weighing System		Opt	
DOOR			
Drum opening dimensions	mm	640 x 515	
	inch	25.2 x 20.3	
Vat opening dimensions	mm	700 x 650	
	inch	27.5 x 25.6	
Height base door	mm	800	
	inch	31,5	
POWER			
Motor	kW	4	
Electric heating power	kW	27	
Max. power (Electric model)	kW	31	
Max. power (Steam model)	kW	4	
CONNECTIONS		E/DUAL	STEAM
Tension 230V- I + N + T	Nºxmm2/A	-	-
Tension 230V- III + T	Nºxmm2/A	4 x16 / 80A	4 x 2,5 / 16A
Tension 400V- III + N + T	Nºxmm2/A	5 x 10 / 50A	5 x 2,5 / 10A
Steam inlet (Steam model)	mm	20/27	
	inch	3/4"	
Maximum steam consumption (Steam)	Kg/h	16,3	
Water inlet	mm	20/27	
	inch	3/4"	
Water main pressure	bar	3 - 5	
	psi	43 - 72	
Maximum water consumption*	Lit/h	260	
Drain	mm	80	
	inch	3"	
Drainage capacity	Lit/min	160	
	cfm	5,65	
DIMENSIONS / PACKING DIMENSIONS			
Net width / Gross width	mm	1.422 / 1.608	
	inch	56 / 63,3	
Net depth / Gross depth	mm	1.195 / 1.300	
	inch	47 / 51,2	
Net height / Gross height	mm	1.615 / 1.720	
	inch	63,5 / 67,7	
Net weight / Gross weight	Kg	926 / 946	
	Lb	2.041 / 2.085,6	
Volume	m ³	2,74 / 3,60	
	ft ³	96,76 / 127	

* N°2 Program, 100% load



E = Electricity

(*) Se référer à / refer to "user & installation manuel " §2.2.6 - p10 (pour détails / for details)

EC/ED/EF = Eau Chaude / Douce / Froide
hot water / soft / cold
3/4" M - 3/5 Bars - 100l/min MAX

SI = Entrée vapeur / Steam Inlet
6 Bars / 240 Kg/h - Max 10 Bars

V= Event / Vent

D = Vidange / Drain

Nota :

- Pour les arrivées d'eau, vapeur et électricité, les machines devront être installées selon les normes en vigueur. (This machine must be installed in compliance with all local regulations)

- Le châssis doit impérativement porter sur toute sa longueur et sur un sol parfaitement plan et de niveau. (The frame must be installed on a perfectly level floor)

- Il est impératif de fixer la machine au sol par les orifices prévus à cet effet. (This machine must be fixed on the floor by threaded rods.)