



WASHING

SANITARY BARRIERS LBS RANGE LBS-50 TP2



Pullman drum option

CHARACTERISTICS

TP2

- 7" touch screen easy to use and fully programmable, double display.
- Connection USB. Free software online for programming, telemetry, data analysis...
- Videos on display (instructions...).
- 37 languages.
- 8 dosing signals as standard.

OUTSTANDING FEATURES

- Automatic positioning of drum with motor brake.
- 3 water inlets as standard.
- Wet cleaning features ready.
- G-FACTOR 375.
- Telemetry as standard.
- Heating: electric, steam, and new dual heating model (electric+steam).

EFFICIENCY

- Intelligent consumption.
- Optimal loading.
- Water Recovery tanks ready: KRS.
- Low water consumption.
- High G-FACTOR: reduced residual moisture > reduced drying time.

CONNECTIVITY

- IoT FagorConnect.
- Remote technical service.
- Laundry management.

ERGONOMICS

- Huge door opening making loading/unloading easier.
- Easy friendly drum opening by push button.
- Loading height: door base 800 mm.
- Pullman drum: load optimisation (option).

MAINTENANCE

- Electric components on the left side, mechanic components on the right side and connections on the top (protected from water and detergents).
- Central drain as standard.

- Technical menu: statistics, alarms, autotest, data recovery for technicians and maintenance.

OTHERS

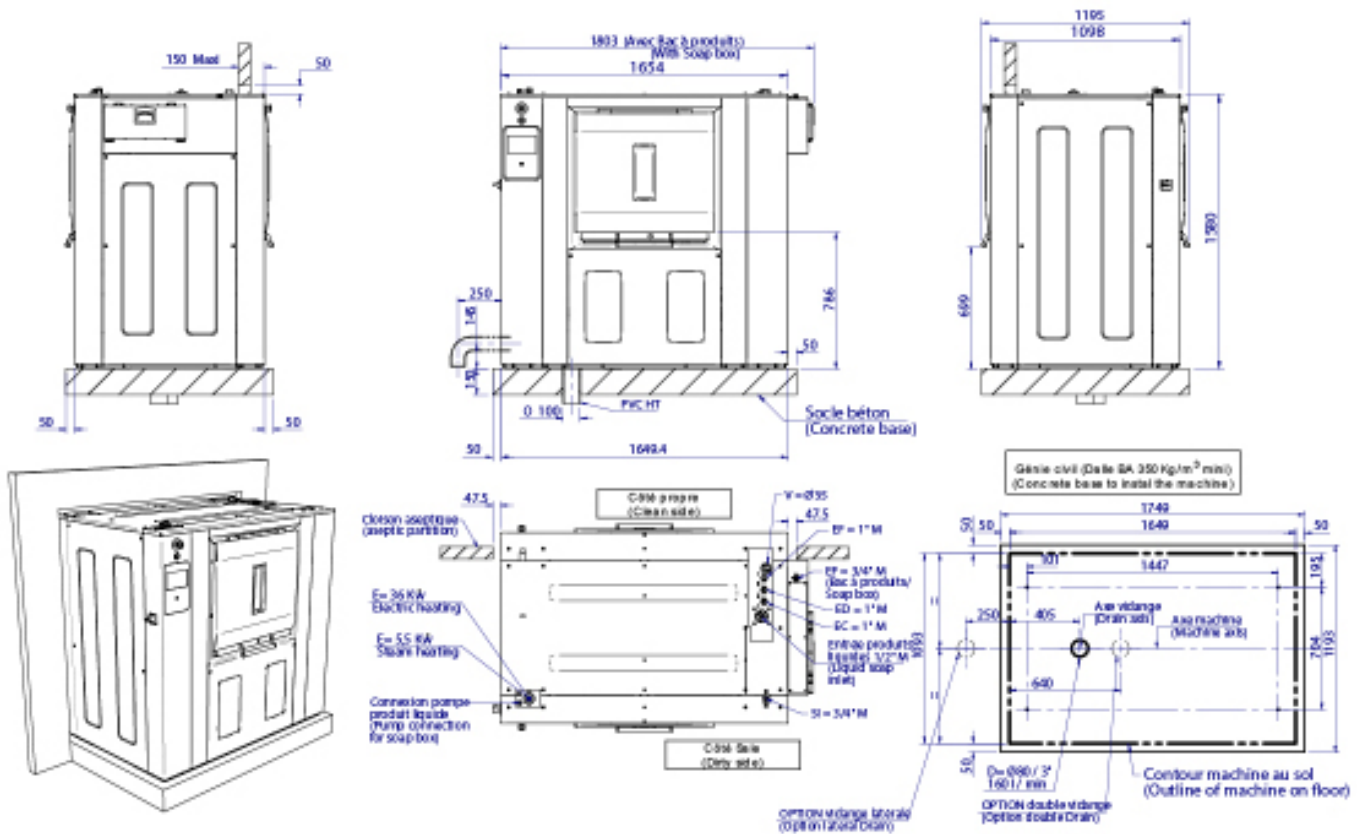
- 2 opposed doors. Pass-through barrier washer.
- Ready to be connected to dosing pumps.
- Grey skinplate outer casing.
- Drum and vat in stainless steel AISI 304.
- Frequency inverter to control imbalance.
- CE approved product.
- Third water inlet.

OPTIONS

- 1-door opening (single side operation).
- Pullman drum.
- Auto Weight: automatic weighing sensor system on feet (Includes kit with 6 extra dosing signals).
- Relay card with 6 extra dosing signals: up to 14 signals.
- Double drain.
- Titration valve.
- Side drain valve.
- Low steam pressure (0,5 bar).
- Detergent box with 4 compartments.
- UPS device (in case of power failure).
- End of cycle light alarm.
- Plinth to align loading height (door base at 850mm).
- Stainless steel AISI 304 outer casing.
- Stainless steel AISI 304 sanitary frame.
- Other voltages.

| | UNIT. | LBS-50 TP2 | |
|--|----------|----------------|---------------|
| DRUM | | | |
| Capacity 1:9 | Kg | 54,3 | |
| | Lb | 119,8 | |
| Capacity 1:10 | Kg | 49 | |
| | Lb | 108 | |
| Volume | l | 489 | |
| | ft³ | 17,27 | |
| Diameter | mm | 800 | |
| | inch | 31,5 | |
| Depth | mm | 974 | |
| | inch | 38,3 | |
| Number of compartments | Nº. | 1 | |
| Pullman partition of drum | | Opt | |
| GENERAL DETAILS | | | |
| Washing speed | r.p.m. | 45 | |
| Spining speed | r.p.m. | 920 | |
| G Factor | | 375 | |
| Maximum force transmitted | KN | 3,74 | |
| Frequency-dynamic force | Hz | 15,4 | |
| Sound level | dB | < 70 | |
| Double drain | | Opt | |
| Weighing System | | Opt | |
| DOOR | | | |
| Drum opening dimensions | mm | 640 x 515 | |
| | inch | 25.2 x 20.3 | |
| Vat opening dimensions | mm | 700 x 650 | |
| | inch | 27.5 x 25.6 | |
| Height base door | mm | 800 | |
| | inch | 31,5 | |
| POWER | | | |
| Motor | kW | 5,5 | |
| Electric heating power | kW | 36 | |
| Max. power (Electric model) | kW | 41,5 | |
| Max. power (Steam model) | kW | 5,5 | |
| CONNECTIONS | | E/DUAL | STEAM |
| Tension 230V- I + N + T | Nºxmm2/A | - | - |
| Tension 230V- III + T | Nºxmm2/A | 4 x 25 / 125A | 4 x 2,5 / 16A |
| Tension 400V- III + N + T | Nºxmm2/A | 5 x 16 / 63A | 5 x 2,5 / 10A |
| Steam inlet (Steam model) | mm | 20/27 | |
| | inch | 3/4" | |
| Maximum steam consumption (Steam) | Kg/h | 23,3 | |
| Water inlet | mm | 26/34 | |
| | inch | 1" | |
| Water main pressure | bar | 3 - 5 | |
| | psi | 43 - 72 | |
| Maximum water consumption* | Lit/h | 450 | |
| Drain | mm | 80 | |
| | inch | 3" | |
| Drainage capacity | Lit/min | 160 | |
| | cfm | 5,65 | |
| DIMENSIONS / PACKING DIMENSIONS | | | |
| Net width / Gross width | mm | 1.717 / 1.903 | |
| | inch | 67,6 / 74,9 | |
| Net depth / Gross depth | mm | 1.195 / 1.300 | |
| | inch | 47 / 51,2 | |
| Net height / Gross height | mm | 1.615 / 1.720 | |
| | inch | 63,5 / 67,7 | |
| Net weight / Gross weight | Kg | 1.063 / 1.085 | |
| | Lb | 2.344 / 2.392 | |
| Volume | m³ | 3,31 / 4,26 | |
| | ft³ | 116,89 / 150,3 | |

* N°2 Program, 100% load



E = Electricity

(*) Se référer à / refer to "user & installation manuel " §2.2.6 - p10 (pour détails / for details)

EC/ED/EF = Eau Chaude / Douce / Froide
hot water / soft / cold
1" M - 3/5 Bars - 130l/min MAX
3/4" M - 3/5 Bars - 100l/min MAX

SI = Entrée vapeur / Steam Inlet
6 Bars / 240 Kg/h - Max 10 Bars

V= Event / Vent

D = Vidange / Drain

Nota :

- Pour les arrivées d'eau, vapeur et électricité, les machines devront être installées selon les normes en vigueur.(This machine must be installed in compliance with all local regulations)

- Le chassis doit impérativement porter sur toute sa longueur et sur un sol parfaitement plan et de niveau. (The frame must be installed on a perfectly level floor)

- Il est impératif de fixer la machine au sol par les orifices prévus à cet effet. (This machine must be fixed on the floor by threaded rods.)