

WASHING

NORMAL SPIN WASHERS LOW AND MEDIUM CAPACITY LN-18/22 TP2



CHARACTERISTICS

TP2

- User friendly and totally programmable 7"
- USB Connection. Online platform free of charge for programming, telemetry, data analysis...thanks to the IoT.
- Videos on display (ads, instructions, etc.)
- 37 languages.
- 8 dosing signals as standard.

G FACTOR

- G-FACTOR 200.

EFFICIENCY

- Intelligent consumption.
- Optimal loading.
- Low water consumption.

VERSATILITY

- Make to order: customisation.
- OPL < > COIN.
- Electric < > Hot water.
- Wet cleaning features.

CONNECTIVITY

- IoT - FagorKonnnect.
- Remote technical service.
- Management of laundries: OPL and COIN.
- Remote payment.

ERGONOMICS

- Biggest door diameters: Ø460.
- Easy opening/closing system for door lock.

MAINTENANCE

- Hinged panel: easy access to parts.
- Equivalent parts for all models: contactors, electronic devices, gear.
- Technical menu: traceability, error diagnosis.

OTHERS

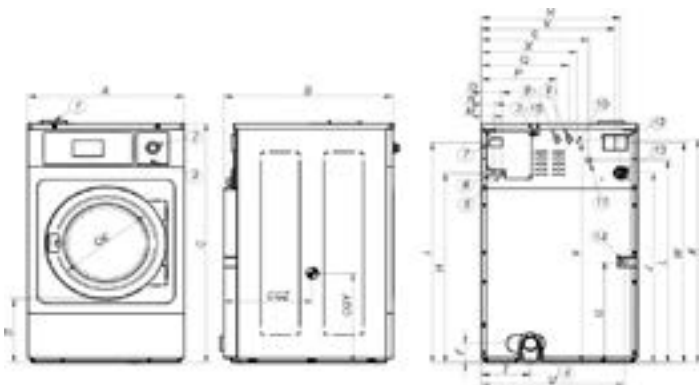
- Hard mounted washers.
- Anchoring to floor with anchoring base.
- Panels in skinplate.
- Drum and tub in stainless steel AISI 304
- 3 water inlets.
- CB and WRAS approved product Option ETL.

OPTIONS

- DQ-2 Dosing pump kit.
- Extra dosing pump DB-1.
- SLUICE: model with 8mm drum holes.
- Anchoring base.
- Double drain.
- Normally closed valve.
- Water RE-CYCLE: recirculation of bath water.
- Relay card with 6 extra dosing signals: up to 14 signals.
- Silicone gasket.
- Reversible door opening.
- Tropicalized model: protected board.
- Steam kit to transform an E or HW heated machine into steam version.
- Stainless steel AISI 304 outer casing.
- Stainless steel AISI 304 front panel.
- Maritime voltage for electric models: 440V III 50/60 Hz No neutral.
- Coin / token kit.
- Auto unlock kit for the door.

		U.	LN-18 TP2	LN-22 TP2		
DRUM						
Load capacity 1:9 / 1:10		Kg	20/18	25/22		
Volume		l	180	220		
Diameter		mm	700	700		
Depth		mm	470	560		
GENERAL DETAILS						
Washing speed / Spining speed		r.p.m.	50/714	50/714		
G Factor		-	200	200		
Maximum force transmitted		KN	2,63 ±5	3,04 ±5		
Frequency-dynamic force		Hz	8,42	8,42		
Noise level		dB	<70	<70		
Coin laundry version		-	Yes	Yes		
Double drain		-	Opt.	Opt.		
Weighing System / Tilting System		-	No	No		
Option SLUICE		-	Yes	Yes		
DOOR						
Height center door / Height door		mm	655/348	655/348		
Diameter		mm	460	460		
POWER						
Motor		kW	2,2	2,2		
Electric heating power		kW	12	12		
Total electric power (electric model)		kW	12,75	12,75		
Total electric power (hw, steam model)		kW	2,2	2,2		
CONNECTIONS			ELECTRIC	STEAM/HOT WATER	ELECTRIC	STEAM/HOT WATER
Tension 230V - I + N + T	N° x mm2 / A	2x16+T / 63A	2x1,5+T / 16A	2x16+T / 63A	2x1,5+T / 16A	
Tension 230V - III + T	N° x mm2 / A	3x6+T / 40A	-	3x6+T / 40A	-	
Tension 400V - III + N + T	N° x mm2 / A	4x4+T / 32A	-	4x4+T / 32A	-	
Steam inlet (Steam model)	inch	1/2"		1/2"		
Maximum steam consumption (Steam model)	Kg/h	12		12		
Water inlet	inch	3/4"		3/4"		
Water main pressure	Kg/cm ²	2-4		2-4		
Maximum water consumption	Lit/h	120*		120*		
Drain	mm/inch	3"		3"		
Drainage capacity	Lit/min	200		200		
DIMENSIONS / PACKING DIMENSIONS						
Net Width / Gross Width	mm	788/850		788/850		
Net Depth / Gross Depth	mm	935/1.013		1.035/1.106		
Net Height / Gross Height	mm	1.307/1.583		1.307/1.583		
Net weight / Gross weight	Kg	272/309		295/335		
Volume	m ³	1,36		1,5		

* Programme No. 20, 75% load



- | | |
|---|----------------------------------|
| 01. Soap dispenser | 08. Auxiliar water inlet |
| 02. Emergency stop | 09. Hot water inlet |
| 03. USB port | 10. Equipotential connection |
| 04. Drain | 11. Cold water inlet |
| 05. Electric connection to liquid soap pump | 12. Blur output / Water overload |
| 06. Electrical connection | 13. Liquid soap connection |
| 07. Main switch | 14. Steam connection |
| | 15. Ethernet port |

	A	B	C	D	E	F	G	H	I	J	K	L	M	N	O	P	Q	R	S	T	U	V	W	X	Y	CGY	CGZ	
LN-18	mm	788	935	1.307	348	460	143	552	1.035	1.203	1.038	1.222	1.107	61	74	101	385	445	706	544	245	724	676	1.202	485	1.202	479	546
LN-22	mm	788	1.035	1.307	348	460	143	552	1.035	1.203	1.038	1.222	1.107	61	74	101	385	445	706	544	249	724	676	1.202	485	1.202	479	586