



**Catalogue**  
**FOOD SERVICE**  
**Chapter**  
**COOKING**

**Specific model**  
SB-E710 400V 3N 50/60Hz

19057670

29/05/2024

**DENOMINATION:**

Electric tilting bratt pan, manual with stainless steel tank of 60 L, 700 range.

**DESCRIPTION :**

- Laser-cut joints, automatic welding and polishing. Hidden screws.
- Lever system to raise the well. The well can be raised until it is vertical to completely drain it.
- Entire machine structure made of stainless steel.
- Well designed with rounded corners and no edges, with a large opening for unloading to facilitate all cooking and cleaning operations.
- The great thickness of the well base (10 mm) guarantees even heat distribution.
- Well filled with water through a solenoid valve which is operated by a switch on the front of the machine. The filling pipe is located at the back of the machine.
- Double-walled lid with a draining rack at the back to redirect condensation water towards the well interior.
- The closed lid is the same height as surface tops of the range and since it does not require any protruding element or reinforcement, it can be used as a worktop.
- Compensation system to prevent sharp falls.
- Front access lid handle.
- Electrically heated using stainless steel heating elements located below the base of the well.
- Thermostatic temperature control of the well floor, between 50 and 300 °C.
- Heating through electric heating elements located in the base of the well itself which, together with the great thickness of the well base, ensure maximum uniformity in heat distribution in all cases, guaranteeing consistent cooking.

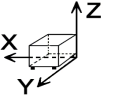
**POSSIBLE OPTIONS :**

- 230 1N- Transformation A 230 V single phase
- 230 III - A 230 V three-phase transformation without neutral
- Marine Transformation for boat - Tilting and boiling pans

**POSSIBLE ACCESSORIES :**

- KORE WHEELS
- TALL CHIMNEY KORE

**DIMENSIONS**



X Width	800 mm	X Gross width	840 mm
Y Depth	730 mm	Y Gross depth	822 mm
Z Height	850 mm	Z Gross height	1255 mm
Net Weight	195,0 kg	Gross Weight	213,0 kg
Net volume	0,500 m3	Gross volume	0,867 m3

**ELECTRICITY TECHNICAL SPECIFICATIONS**

Electric power	10,000 kW
Amperage (A)	17,4A
Heating power	10,00 kW
Voltage	400V - 3N
Electric frequency	50/60Hz

**WATER TECHNICAL SPECIFICATIONS**

Pressure	H2O: 200-400kPa(2-4bar)
Water max consumption	0,00 L/h
Maximum Temperature	Water Inlet Max Temp:60°C

**CONNECTIONS TECHNICAL SPECIFICATIONS**

230 V three-phase wiring	3X6MM2+T
Single-phase 230V wiring	2X10MM2+T
Three-phase +N 400V wiring	3X2,5MM2+T+N
Water inlet diameter	3/4"



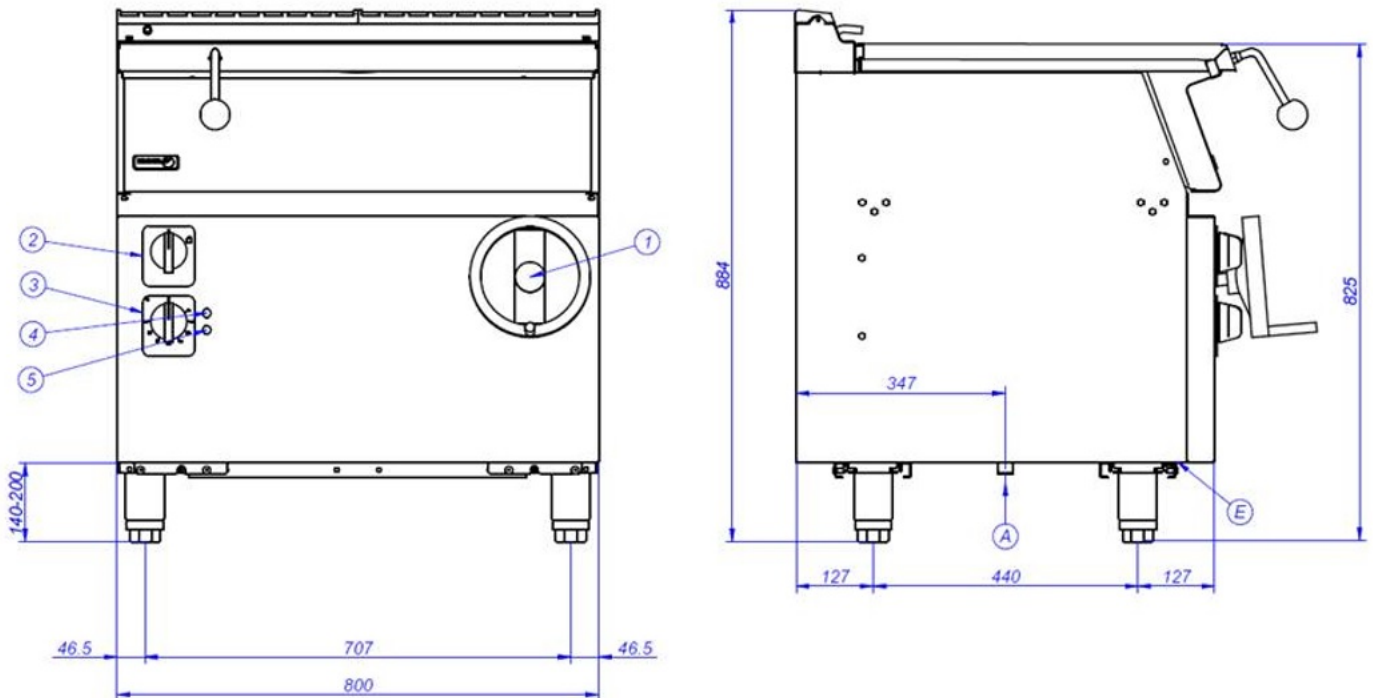
**Catalogue**  
FOOD SERVICE  
**Chapter**  
COOKING

**Specific model**  
SB-E710 400V 3N 50/60Hz

19057670

29/05/2024

## SB-E710



E – Conexión eléctrica  
1 – Volante elevación  
2 – Grifo válvula agua  
3 – Grifo válvula gas  
4 – Piloto verde  
5 – Piloto ámbar

Electrical connection  
Wheel elevation control  
Water valve tap  
Gas valve tap  
Green pilot  
Ambar pilot

Connexion électrique  
Manivelle de levage  
Robinet vanne d'eau  
Robinet vanne de gaz  
Lumière verte  
Lumière ambre