



Catalogue
FOOD SERVICE
Chapter
COOKING

Specific model
B-E705 I 400V 3N

19074788

04/09/2023

DENOMINATION:

Electric grill, stainless steel grill, half module, 700 range.

DESCRIPTION :

- Stamped surface tops manufactured in 1.5 mm thick AISI-304 stainless steel
- Laser-cut joints and automatic welding. Hidden screws.
- Fitted with an opening to collect cooking grease and a tray to store it.
- Machines are fitted with removable 130 mm high guards to prevent splashes, made of stainless steel.
- High temperature enamelled cast iron flue protector.
- Access to the components from the front.
- Machines with IPX5 grade water protection.
- Groups of stainless steel covered elements upon which you can cook food directly (a group of 3 elements for half-sized module models and 2 groups for whole module models).
- Water tray for safety. It also allows an adequate level of humidity to be reached for optimum cooking conditions.

POSSIBLE OPTIONS :

- 230 1N- Transformation A 230 V single phase
- 230 III - A 230 V three-phase transformation without neutral
- MARINE - Other machines - Ship transformation - 440 III

POSSIBLE ACCESSORIES :

- ACCESSORIES KORE
- STANDS 700
- TALL CHIMNEY KORE

DIMENSIONS



X Width	400 mm	X Gross width	440 mm
Y Depth	730 mm	Y Gross depth	822 mm
Z Height	290 mm	Z Gross height	535 mm
Net Weight	30,0 kg	Gross Weight	43,0 kg
Net volume	0,080 m3	Gross volume	0,193 m3

ELECTRICITY TECHNICAL SPECIFICATIONS

Electric power	4,080 kW
Amperage (A)	5,9A
Heating power	4,08 kW
Voltage	400V - 3N
Electric frequency	50/60Hz

CONNECTIONS TECHNICAL SPECIFICATIONS

230 V three-phase wiring	3X1,5MM2+T - 16A
Single-phase 230V wiring	2X2,5MM2+T - 25A
Three-phase +N 400V wiring	3X1,5MM2+T+N - 10A



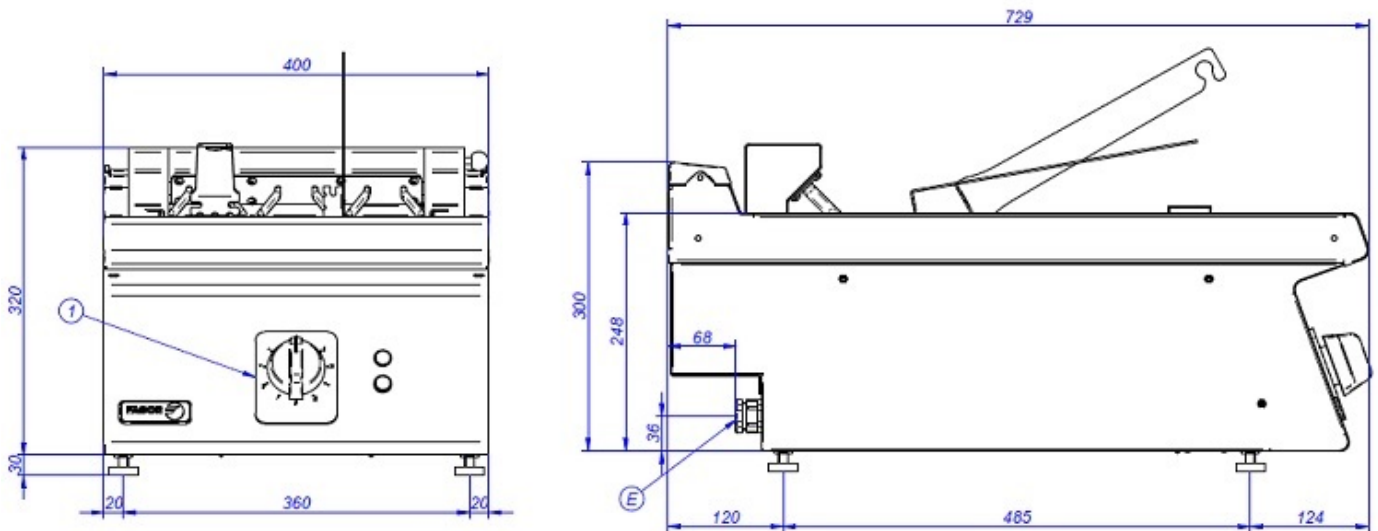
Catalogue
FOOD SERVICE
Chapter
COOKING

Specific model
B-E705 | 400V 3N

19074788

04/09/2023

B-E705



1 - Mando eléctrico
2 - Conexión eléctrica

Electric control
Electrical connection